



Dacia Jogger
Standard Safety Equipment

2021



Adult Occupant



Child Occupant



Vulnerable Road Users



Safety Assist



SPECIFICATION

Tested Model	Dacia Sandero Stepway 1.0TCe, LHD
Body Type	- 5 door hatchback
Year Of Publication	2021
Kerb Weight	1111kg
VIN From Which Rating Applies	- all Joggers
Class	Supermini

SAFETY EQUIPMENT

	Driver	Passenger	Rear
FRONTAL CRASH PROTECTION			
Frontal airbag	●	●	✗
Belt pretensioner	●	●	●
Belt loadlimiter	●	●	●
Knee airbag	✗	✗	✗
LATERAL CRASH PROTECTION			
Side head airbag	●	●	●
Side chest airbag	●	●	✗
Side pelvis airbag	●	●	✗
Centre Airbag	✗	✗	✗

SAFETY EQUIPMENT (NEXT)

	Driver	Passenger	Rear
CHILD PROTECTION			
Isofix	—	×	●
Integrated CRS	—	×	×
Airbag cut-off switch	—	●	—
SAFETY ASSIST			
Seat Belt Reminder	●	●	●

OTHER SYSTEMS	
Active Bonnet	×
AEB Vulnerable Road Users	×
AEB Pedestrian - Reverse	×
AEB Car-to-Car	●
Speed Assistance	●
Lane Assist System	×

Note: Other equipment may be available on the vehicle but was not considered in the test year.

- Fitted to the vehicle as standard ○ Fitted to the vehicle as part of the safety pack
 ○ Not fitted to the test vehicle but available as option or as part of the safety pack × Not available — Not applicable



ADULT OCCUPANT

Total 26.6 Pts / 70%

GOOD

ADEQUATE

MARGINAL

WEAK

POOR

Frontal Impact

12.1 / 16 Pts



Mobile Progressive Deformable Barrier



Full Width Rigid Barrier

Lateral Impact

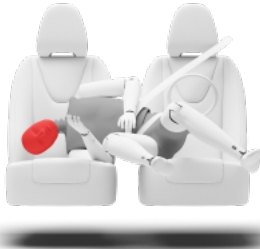
10.7 / 16 Pts



Side Mobile Barrier



Side Pole



Far-Side Excursion



Occupant Interaction

Rear Impact

3.3 / 4 Pts



Rear Seat



Front Seat



ADULT OCCUPANT

Total 26.6 Pts / 70%

 GOOD  ADEQUATE  MARGINAL  WEAK  POOR

Rescue and Extrication		0.5 / 2 Pts
Rescue Sheet	Available, ISO compliant	
Advanced eCall	Not available	
Multi Collision Brake	Not available	

Comments

The passenger compartment remained stable in the frontal offset test. Dummy readings indicated protection that was at least adequate for the knees and femurs of the driver and passenger. However, structures in the dashboard presented a risk of injury to occupants of different sizes and to those sitting in different positions, and protection for this part of the body was downgraded to marginal. Chest protection was also rated as marginal for both front seat occupants, based on dummy readings of chest compression. Analysis of the deformable barrier after the test revealed that it would be a benign crash opponent. In the full-width rigid barrier test, protection of the front seat driver and rear seat passenger was at least adequate for all critical parts of the body. In the side barrier test, representing an impact by another vehicle, chest compression indicated a marginal level of protection. In the side pole test, protection of all critical body areas was rated as good or adequate. However, the side curtain airbag does not extend back far enough to provide protection for occupants in the optional third row seats so the Jogger lost points compared to the Sandero Stepway on which the rating is based. An assessment of the excursion of an occupant in a far-side impact showed poor protection and the car does not have a counter-measure, such as a centre airbag, for this accident type. Tests on the front seats and head restraints demonstrated good protection against whiplash injuries in the event of a rear-end collision. However, a geometric analysis of the rear seats indicated marginal whiplash protection.



CHILD OCCUPANT

Total 34.1 Pts / 69%

 GOOD

 ADEQUATE

 MARGINAL

 WEAK

 POOR

Crash Test Performance based on 6 & 10 year old children

18.6 / 24 Pts

Frontal Impact

10.6 Pts



Lateral Impact

8 Pts




Restraint for 6 year old child: *Britax Römer KidFix XP*Restraint for 10 year old child: *Britax Römer KidFix XP (Booster only)*

Safety Features

5.0 / 13 Pts

	Front Passenger	2nd row outboard	2nd row center	3rd row outboard *
Isofix	✗	●	✗	✗
i-Size	✗	●	✗	✗
Integrated CRS	✗	✗	✗	✗

* Third row seats available as option

 Fitted to test car as standard
  Not on test car but available as option
  Not available

CRS Installation Check

10.5 / 12 Pts

● Install without problem
 ● Install with care
 ● Safety critical problem
 ✗ Installation not allowed

■ i-Size CRS

Maxi Cosi 2way Pearl & 2wayFix (i-Size)



Maxi Cosi 2way Pearl & 2wayFix (i-Size)



BeSafe iZi Kid X2 i-Size (i-Size)



Britax Römer TriFix2 i-Size (i-Size)



BeSafe iZi Flex FIX i-Size (i-Size)



■ ISOFIX CRS

BeSafe iZi Combi X4 ISOfix (ISOFIX)



Cybex Solution Z i-Fix (ISOFIX)





CHILD OCCUPANT

Total 34.1 Pts / 69%

■ Universal Belted CRS

Maxi Cosi Cabriofix (Belt)



Maxi Cosi Cabriofix & Easyfix (Belt)



Britax Römer King II LS (Belt)



Cybex Solution Z i-Fix (Belt)





CHILD OCCUPANT

Total 34.1 Pts / 69%

	Seat Position					
	Front	2nd row			3rd row	
	PASSENGER	LEFT	CENTER	RIGHT	LEFT	RIGHT
Maxi Cosi 2way Pearl & 2wayFix (i-Size)	—	●	—	●	—	—
Maxi Cosi 2way Pearl & 2wayFix (i-Size)	—	●	—	●	—	—
BeSafe iZi Kid X2 i-Size (i-Size)	—	●	—	●	—	—
Britax Römer TriFix2 i-Size (i-Size)	—	●	—	●	—	—
BeSafe iZi Flex FIX i-Size (i-Size)	—	●	—	●	—	—
BeSafe iZi Combi X4 ISOfix (ISOFIX)	—	●	—	●	—	—
Cybex Solution Z i-Fix (ISOFIX)	●	●	—	●	—	—
Maxi Cosi Cabriofix (Belt)	●	●	●	●	●	●
Maxi Cosi Cabriofix & Easyfix (Belt)	●	●	✗	●	●	●
Britax Römer King II LS (Belt)	●	●	●	●	●	●
Cybex Solution Z i-Fix (Belt)	●	●	●	●	●	●

● Install without problem ● Install with care ● Safety critical problem ✗ Installation not allowed
 — Not available

Comments

In the frontal offset test, protection of the chest and neck of the 10 year dummy was rated as weak, based on dummy readings during the impact. For the 6 year dummy, protection of the neck was marginal while that of the head and chest was adequate and good respectively. The front passenger airbag can be disabled to allow a rearward-facing child restraint to be used in that seating position. Clear information is provided to the driver regarding the status of the airbag and the system was rewarded. One CRS, a full sized rearward facing toddler restraint, could be fitted in the car with no problem but was deemed a fail because Dacia indicate in the user manual that the car cannot accommodate this (R3) category of restraint. One type of universal restraint could not be properly fitted in the optional third row seats. Otherwise, restraint systems could be installed and accommodated properly.



VULNERABLE ROAD USERS

Total 22.2 Pts / 41%



GOOD



ADEQUATE



MARGINAL



WEAK



POOR

Pedestrian

22.2 / 36 Pts



Head Impact	14.1 Pts
Pelvis Impact	2.3 Pts
Leg Impact	5.8 Pts

Vulnerable Road Users

0.0 / 18 Pts



VULNERABLE ROAD USERS

Total 22.2 Pts / 41%

Comments

The protection provided by the bonnet to the head of a struck pedestrian was predominantly good or adequate with poor results recorded at the base of the windscreen and on the stiff windscreen pillars. The bumper provided good or adequate protection to pedestrians' legs at all test locations. However, protection of the pelvis was poor over much of the width of the car. The autonomous emergency braking (AEB) system of the Jogger does not detect vulnerable road users such as pedestrians and cyclists.



SAFETY ASSIST

Total 6.4 Pts / 39%

 GOOD


 ADEQUATE

 MARGINAL

 WEAK


 POOR

Speed Assistance


 1.3 / 3 Pts








System Name	Speed limiter
Speed Limitation Function	Manually set (accurate to 5km/h)




Occupant Status Monitoring

 0.6 / 3 Pts

> Seatbelt Reminder

 0.6 / 2 Pts

Applies To	Front and rear seats, including optional third row		
Warning	Driver Seat	Front Passenger(s)	Rear Passenger(s)
Visual			
Audible			
Occupant Detection	—		—

 Pass
  Fail
  Not available

> Driver Monitoring

0.0 / 1 Pts



SAFETY ASSIST

Total 6.4 Pts / 39%



Lane Support 0 Pts

AEB Car-to-Car 4.5 / 6 Pts

System Name	Active Emergency Braking
Type	Autonomous emergency braking and forward collision warning
Operational From	7 km/h
Sensor Used	Radar only

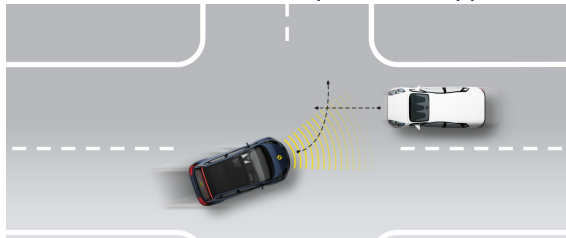


SAFETY ASSIST

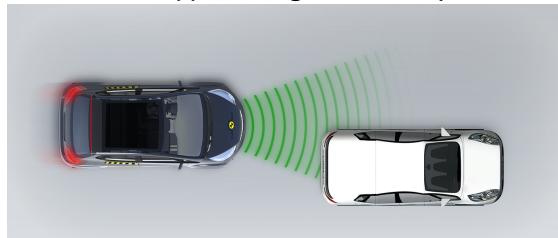
Total 6.4 Pts / 39%

■ Autobrake function only

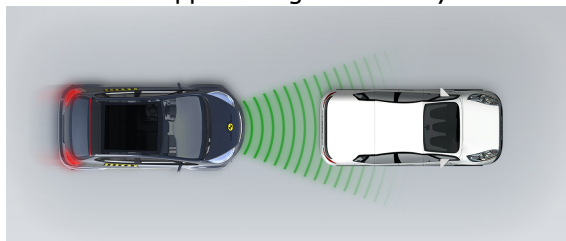
Test car turns across the path of an approaching car



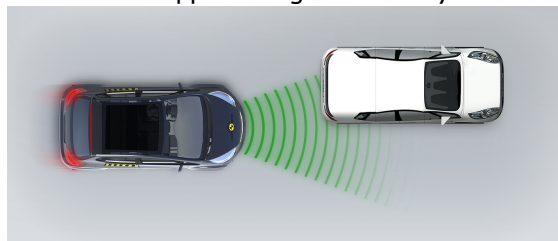
Approaching a stationary car



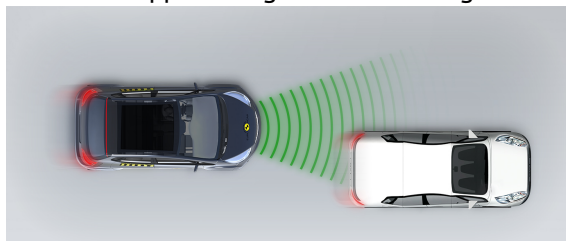
Approaching a stationary car



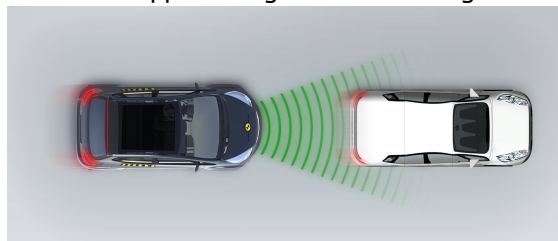
Approaching a stationary car



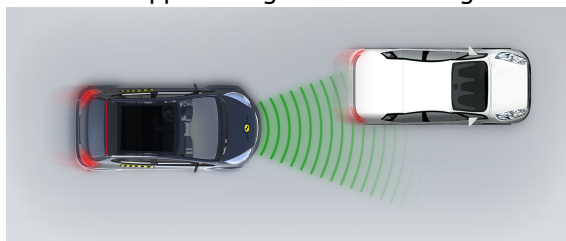
Approaching a slower moving car



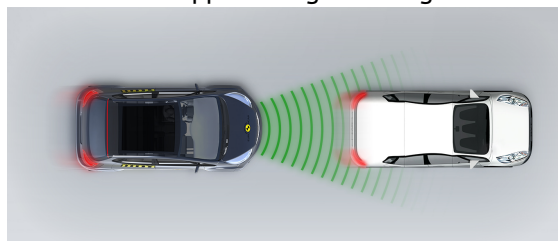
Approaching a slower moving car



Approaching a slower moving car



Approaching a braking car



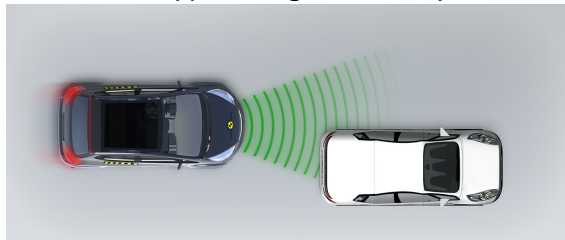


SAFETY ASSIST

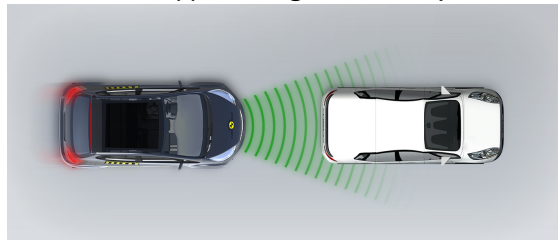
Total 6.4 Pts / 39%

■ Driver reacts to warning

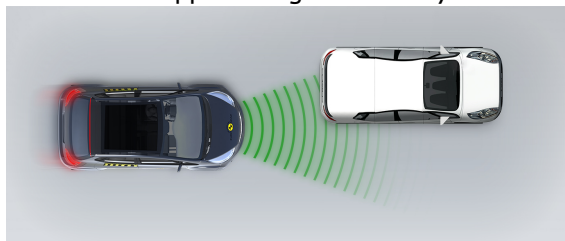
Approaching a stationary car



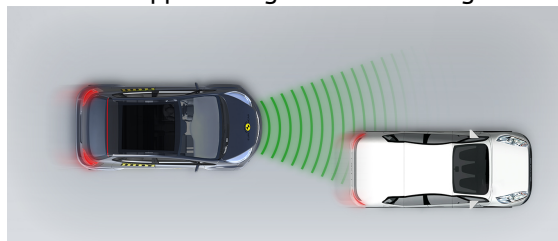
Approaching a stationary car



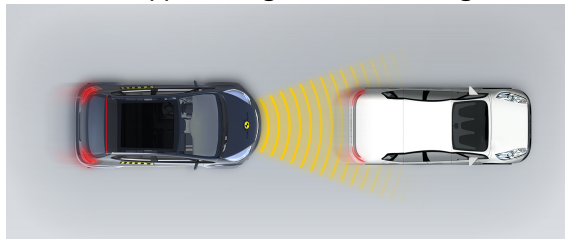
Approaching a stationary car



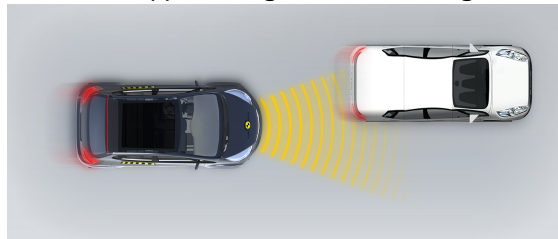
Approaching a slower moving car



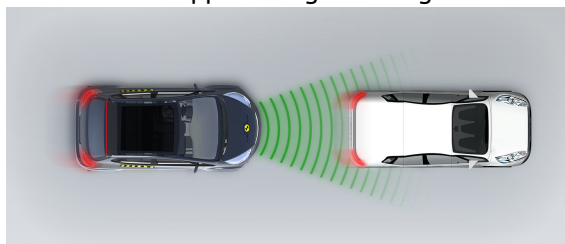
Approaching a slower moving car



Approaching a slower moving car



Approaching a braking car





SAFETY ASSIST

Total 6.4 Pts / 39%

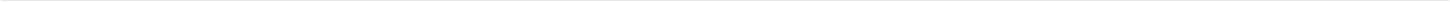
Comments

A seat belt reminder system is standard for the front and rear seats. However, there is no reminder for the seat belts in the optional third row, so the Jogger loses points. A driver-set speed limiter is also standard but the Jogger provides no lane assistance. The AEB system performed well in tests of its response to other vehicles with accidents avoided or mitigated in many cases.

RATING VALIDITY



Variants of Model Range



Annual Reviews and Facelifts



Date	Event	Outcome	
April 2022	Rating Published	2021 